

KÄRCHER

makes a difference



INNOVATIVE. EFFICIENT. FULLY CONFIGURABLE.

Scrubber driers for all your applications

PROFESSIONAL | SCRUBBER DRIERS



RANGE OF APPLICATIONS



LOWER COSTS



COMPLETE SERVICE

DRIVING DOWN COSTS

Want to lower costs? Want to save time when cleaning? If you want to achieve this with scrubber driers, then you are in the right place. With our scrubber driers you save on costs and earn more. And your personnel costs will also decrease. And you can use the time gained elsewhere. And save and earn even more.





TECHNOLOGY THAT MAKES SAVINGS



Gain a whole new experience of productivity. Clean better and faster than doing it by hand. Anytime and anywhere with the same, correct parameters: contact pressure, water volume and cleaning agent dosing unit.

Our scrubber driers are very economical in the consumption of water and cleaning agents. And thanks to EASY Operation, every operator achieves optimal cleaning results straight away - without the need for lengthy instruction or extensive training. Operation using pictograms is so simple.

Always perfect cleaning results

Our forward-looking operating concept with KIK and EASY Operation offers ideal safety and protection for operator, machine and the entire working area. The EASY Operation panel makes the right setting easy for you: simply choose one of the cleaning programmes eco!efficiency mode, Scrub and Vacuum, Scrub with water and cleaning agent, Vacuum or Polish. Your scrubber drier is already optimally set for the respective task. You can also specify the maximum water volume and control the driving speed very precisely. The optimal method and cleaning mode according to the application are also displayed.

No chance of operating errors

Colour-coded operating elements display who is authorised to access where. Yellow indicates all elements for the user. Grey elements are only intended for service technicians. Operation can be so simple and so safe.

Clean with just one turn

You can of course clean the tank by hand, but our tank rinsing system is much more comfortable and effective and faster too. You have no contact with the dirty water and don't get wet or dirty.



Fill up the tank with just one turn

Fill up the fresh water automatically. With Auto Fill the water is supplied via a hose and the automatic system is switched off as soon as the tank is full. During this time the operator can perform other activities.

The key to more success: KIK

KIK Kärcher Intelligent Key gives you optimal protection against operating errors. The machine settings are set by the supervisor for the respective task. The operator only has to insert the KIK key, then EASY Operation starts the preset programme.

IT IS THAT EASY

You need the right solution for every cleaning task. With our scrubber driers a range of applications is available which gives you all possibilities. And we help you find the best solution each time.





YOUR EXACT MACHINE

Take the decisive criteria into consideration when deciding on a machine: the required area performance, the tank volume, the working width, object characteristics and the cleaning frequency. With area performances from approx. 200 to 16,500 m² and different brush heads, our scrubber driers give you all options for the perfect configuration of your ideal scrubber drier.



Your desired configuration

Decide on battery operation or power connector. Then on the appropriate brush head. The available working widths offer all options. Choose the proper suction lips for the respective floor covering. Would you like the tank rinsing system? We generally recommend it.



Home Base Kit

Now you always have the necessary utensils close to hand. You can carry a mop, waste container and many small parts on the machine. Everything is clearly arranged, ready to hand and safely stowed.

Automatic tank interior cleaning

Our scrubber driers have an integrated nozzle system, which automatically cleans the dirty water tank when a water hose is connected and the drain hose is open. An important contribution to HACCP, hygiene and health protection.



Auto Fill filling system

To fill the fresh water tank simply connect a hose with a quick coupling. The water supply stops automatically as soon as the tank is full. Reliable.

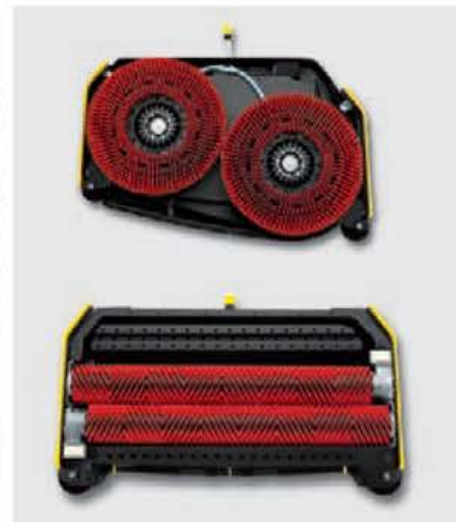
Disc brushes

Brush heads with disc engineering are, depending on the type of device, equipped with 2 disc brushes which work in the opposite direction or a single disc brush, all of which can be replaced simply via a pedal. Disc brushes are ideal for smooth, even floors.



Roller brushes

Brush heads with roller technology work at up to 7 times higher contact pressure than disc brushes and achieve a superior scrubbing performance, especially on uneven floors or in joints. The pre-sweep function can save up to 50% of the cleaning time.



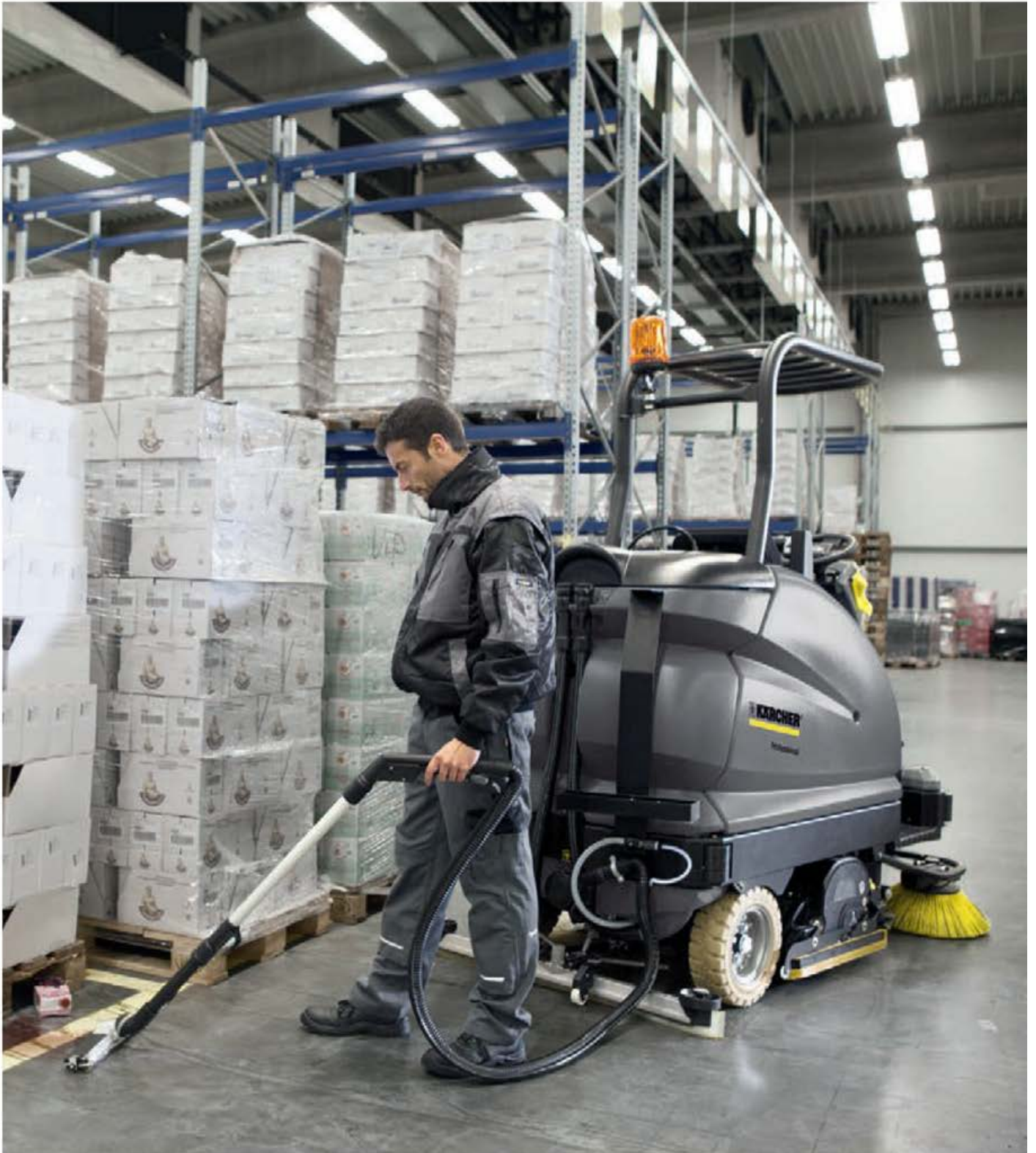
OUR SERVICE, YOUR BENEFIT

Perfect service is part and parcel of the perfect machine. We offer you every service you need. With or without contract. For maximum availability, excellent cleaning results and longer service life of the machine.





AS EASY AS POSSIBLE



Many aspects of work life are becoming more and more complex and complicated. In terms of technology, we are able to make many things easier and simpler for you, e.g. with digitalisation. For this purpose, we reduce the number of components wherever possible. And we make the operation of our machines as easy as possible for you. In combination with the KIK system, our EASY control panel creates a simple operating concept to avoid operating errors: you simply choose the right work mode for the application or configure the key for the user with the correct parameters.

Service and maintenance made easy

Our colour coding on the machine also makes daily maintenance easier for you: yellow components represent operation, grey stands for maintenance. With simple access to batteries, brushes and suction lips, you can replace these items in a few minutes without the need for any tools. The recommended maintenance intervals are shown on the display in good time according to defined time units. This way we help you achieve long-lasting and optimal cleaning results with reduced service times. Simple can also be clever.



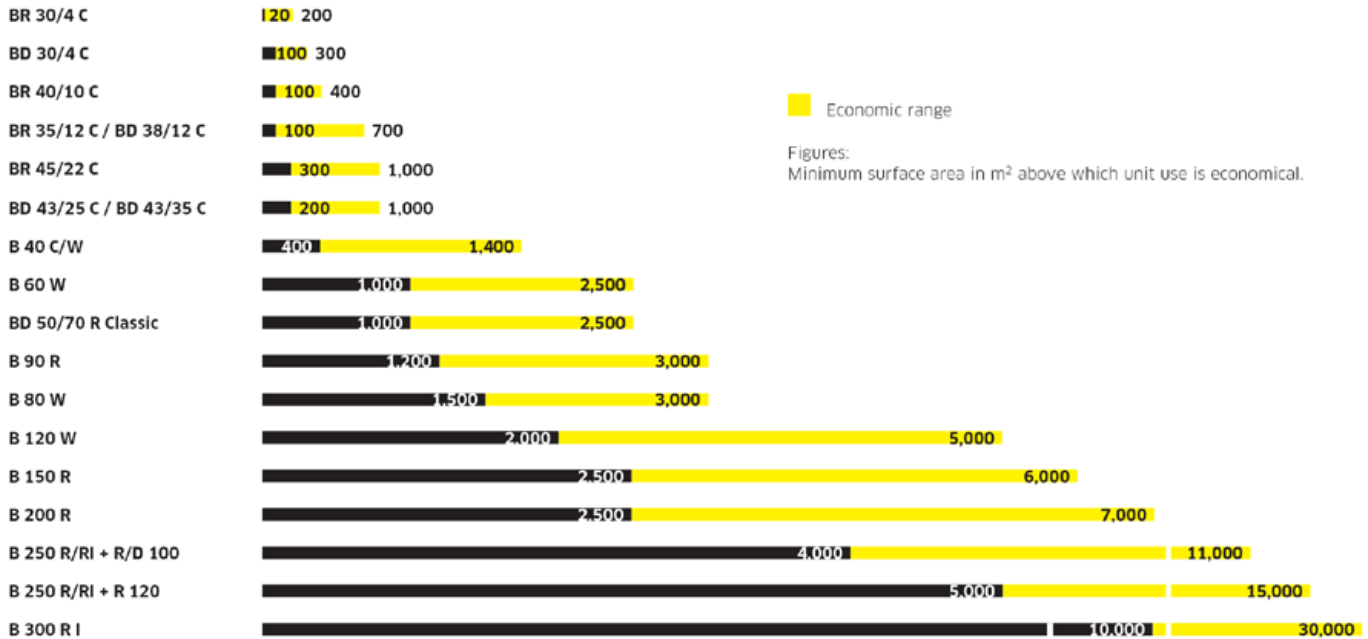
THE KÄRCHER SYSTEM

The development of Kärcher into a system provider follows the principle of achieving more together. In the company itself, as well as with suppliers and particularly with end users, solutions that benefit all parties are sought together. Innovative products and services which together make possible an optimised system: the Kärcher System. By using the Kärcher system, the most important – and ideally all – requirements and needs of the customer are completely fulfilled.

As a system supplier, Kärcher does not want to offer anything and everything, but only what operators need for their individual cleaning system. It is not the available range that is decisive, but the actual demand. It is important to have an answer to all questions relating to performance, efficiency and sustainability. A system that consists of machines, accessories, cleaning agents, services and digital solutions that can be easily integrated into operating procedures and adds value. A system that makes a difference: the Kärcher System.



HOW TO FIND YOUR MACHINE:



How to read our machine names:

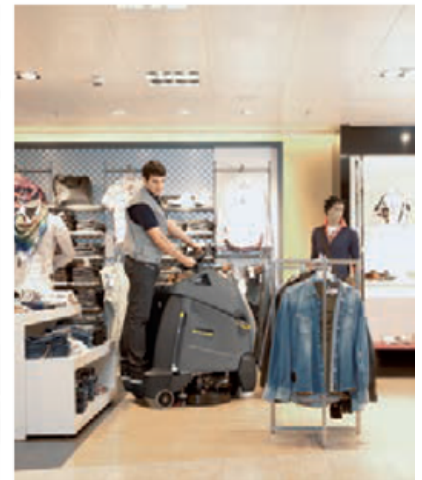
The product name of our scrubber driers shows you the key performance features directly.

Numerical performance specifications:

For scrubber driers, the combination of numbers after the type name indicates the working width in centimetres (1st number) and the volume of the fresh water tank in litres (2nd number after the forward slash). If there is only one number, e.g. B 60 W, this relates to the tank volume. For scrubbers and polishing machines, such as the BDP 50/1500 C, the 1st number corresponds to the working width and the 2nd number is the number of revolutions per minute.

Abbreviations for machine types:

B = Scrubber drier without brush head
BR = Scrubber drier with roller brush
BD = Scrubber drier with disc brush
BRS = Scrubber with roller brush
BDS = Scrubber with disc brush
BDP = Polishing machine with disc



Abbreviations for types and configuration:

C = Compact machine without traction drive
W = Walk-behind machine with drive
R = Ride-on machine
RS = Ride-on or step-on machine
I = Industry machine

Codes for brush heads:

R = Roller head
D = Disc head
S = Oscillating cleaning head

Configuration options:

Bp = Battery-operated
Ep = Power connector (with connection cable)
Pack = Battery and battery charger included in scope of delivery
Esc = Suitable for escalators
FACT = 3 preset cleaning programmes
Dose = Cleaning agent dosing



	Price	Order No.	Working width of brushes (mm)	Vacuuming working width (mm)	Theoretical area performance according to VDMA 24441 (m²/h)	Fresh/Dirty water tank (l)	Traction drive via motor (W)	Variable contact pressure	Sweeping function	Includes battery and battery charger	Cleaning agent dosing	Dose
Ride-on scrubber driers												
B 300 R I	■	1.480-235.2	1045 / 1755	1440	10450-17550	300 / 300	25000 39000	■	■	-	-	-
B 250 R I		1.480-231.2	1000 / 1200	1160 / 1400	8000-9600	250 / 250	2000	■	■	□	□	□
B 250 R		1.480-231.2	1000 / 1200	1160 / 1400	8000-9600	250 / 250	2000	■	■ ¹⁾	□	□	□
B 200 R	■	1.246-200.2	750 / 900	940 / 1060	4500-5400	200 / 200	600	■	■ ¹⁾	□	□	□
B 150 R Adv		1.246-020.2	750 / 900	940 / 1060	7500-9000	150 / 150	1400	■	■ ¹⁾	□	□	□
B 150 R		1.246-020.2	750 / 900	940 / 1060	4500-5400	150 / 150	600	■	■ ¹⁾	□	□	□
B 90 R configured		1.161-000.2	550-750	850 / 940	3300-4500	90 / 90	600	■	■ ¹⁾	□	□	□
B 90 R Adv Dose Bp Pack		1.161-310.0 -311.0	550-750	850 / 940	3300-4500	90 / 90	600	■	■ ¹⁾	- ■	■	■
B 90 R Adv Bp Pack		1.161-308.0 -309.0	550-750	850 / 940	3300-4500	90 / 90	600	■	■ ¹⁾	- ■	■	-
B 90 R Classic Bp Pack		1.161-306.0 -307.0	550-750	850 / 940	3300-4500	90 / 90	600	-	■ ¹⁾	- ■	■	-
BD 50/70 R Bp Pack Classic	■	1.161-071.0	510	850	2500	70 / 75	300	-	-	■	-	-
BD 50/70 R Bp Classic	■	1.161-070.0	510	850	2500	70 / 75	300	-	-	-	-	-
Step-on scrubber driers												
B 95 RS		1.006-200.2	650 / 750	940	2600-3000	95 / 95	600	■	■ ¹⁾	□	□	□
BD 50/40 RS Bp Pack		1.533-170.0 -171.0	508	691	2200	40 / 40	157	-	-	- ■	-	-
BR 55/40 RS Bp Pack		1.533-172.0 -173.0	550	716	2350	40 / 40	157	-	■	- ■	-	-
Walk-behind scrubber driers												
B 120 W		1.005-100.2	750 / 900	940 / 1160	3000-3600	120 / 120	400	■	■ ¹⁾	□	□	□
B 80 W Bp		1.259-010.2	650 / 750	850 / 940	2200-3000	80 / 80	400	■	■ ¹⁾	□	□	□
B 60 W Bp		1.384-020.2	550 / 650	850 / 940	2200-2600	60 / 60	300	■ -	■ ¹⁾	□ -	□ -	□ -
B 60 C Bp Classic		1.384-020.2	510 / 550	850	2040-2200	60 / 60	-	-	■ ¹⁾	-	-	-
B 60 W Ep		1.384-020.2	510 / 550	850	2040-2200	60 / 60	-	■	■ ¹⁾	-	-	-
B 40 W Bp		1.533-210.2	430 / 550	850	1700-2200	40 / 40	130	-	■ ¹⁾	□	□	□
B 40 C Bp Classic		1.533-210.2	430 / 550	850	1700-2200	40 / 40	-	-	■ ¹⁾	□ -	□ -	□ -
B 40 C Ep		1.533-210.2	430 / 550	850	1700-2200	40 / 40	-	-	■ ¹⁾	-	-	-
Compact scrubber driers												
BD 50/50 C Bp Classic BD 50/50 C Bp Pack Classic		1.127-001.0 / -006.0	510	850	2040	50 / 50	-	-	-	- ■	-	-
BD 50/60 C Ep Classic		1.127-002.0	510	850	2040	60 / 60	-	-	-	-	-	-
BR 45/22 C Bp Pack	■	1.783-460.0	450	770	1600	22 / 22	-	-	-	■	-	-
BD 43/25 C Bp Bp Pack		1.515-400.0 / -403.0	430	850	1720	25 / 25	-	-	-	- ■	-	-
BD 43/35 C Ep		1.515-401.0	430	850	1720	35 / 35	-	-	-	-	-	-
BD 38/12 C Bp Pack		1.783-430.0	380	480	1500	12 / 12	-	-	-	■	-	-
BR 35/12 C Bp Pack		1.783-450.0	350	450	1400	12 / 12	-	■	■	■	-	-
BR 40/10 C I Adv		1.783-316.0	400	400	400	10 / 10	-	■	-	-	-	-
BR 40/10 C Adv		1.783-311.0	400	400	400	10 / 10	-	■	-	-	-	-
BR 30/4 C Bp Pack	■	1.783-225.0	300	300	200	4 / 4	-	-	-	■	-	-
BR 30/4 C Adv		1.783-213.0	300	300	200	4 / 4	-	-	-	-	-	-
BR 30/4 C MF*		1.783-220.0 -223.0	300	300	200	4 / 4	-	-	-	-	-	-
BD 30/4 C Bp Pack	■	1.783-230.0	300	325	900	4 / 4	-	-	-	■	-	-
Mopvac												
B 60/10 C	■	1.006-711.0	600	600	2400	10 / 10	-	-	-	-	-	-
Scrubber												
BRS 40/1000 C		1.783-330.0	400	-	450	10	-	-	-	-	-	-
Single-disc machines												
BDS 43/150 C Classic	■	1.291-243.0	430	-	-	10	-	-	-	-	-	-
BDS 51/180 C Adv		1.291-227.0	508	-	-	10	-	-	-	-	-	-
BDS 43/180 C Adv		1.291-226.0	430	-	-	10	-	-	-	-	-	-
BDS 33/180 C Adv		1.291-220.0	330	-	-	8	-	-	-	-	-	-
BDS 43/Duo C I Adv		1.291-241.0	430	-	-	10	-	-	-	-	-	-
BDS 43/Duo C Adv		1.291-223.0	430	-	-	10	-	-	-	-	-	-
BDP 43/450 C Adv		1.291-225.0	430	-	-	-	-	-	-	-	-	-
Staircase/Escalator cleaners												
BR 47/35 Esc		1.310-109.0	470	470	-	35 / 35	-	-	-	-	-	-
BR 45/10 Esc		1.310-121.0	450	450	-	-	-	-	-	-	-	-
BD 17/5 C		1.737-105.0	170 / 200	-	-	-	-	-	-	-	-	-
Polishing machines												
BDP 50/2000 RS Bp Pack		1.002-039.0	508	530	1780	-	155	-	-	■	-	-
BDP 50/2000 RS Bp		1.002-041.0	508	530	1780	-	155	-	-	-	-	-
BDP 50/1500 C		1.291-141.0	508	560	900	-	-	-	-	-	-	-

■ NEW ■ Included in the scope of delivery. □ Optional accessories.
 * Microfibre roller included in the scope of delivery.
 1) In conjunction with cleaning head R.

THE COMPLETE RANGE FOR HARD SURFACE CLEANING

Our scrubber driers are capable of exceptional performance. In order for them to achieve this, they need optimally coordinated accessories and cleaning agents. Only the Kärcher system of machine, original Kärcher

accessories and original Kärcher cleaning agents gives you maximum performance and efficiency for a wide variety of applications. Plus the required functionality and safety.



	Roller technology R			Disc engineering D			Vibration technology S Pad	Cleaning agent recommendation
	Brush (textured surfaces)	Pad (non-textured surfaces)	Microfibre roller	Brush (textured surfaces)	Pad (non-textured surfaces)	Microfibre pad		
Deep cleaning								
Elastic floor coverings								
PVC, lino, rubber, PUR	■	■		■ ■	■			RM 752 ¹⁾ /754
Natural stone floors (granite, marble, slate, etc.)								
Matt	■ ■ ²⁾	■		■ ■	■			RM 752 ¹⁾ /754/751 ³⁾
Glossy		■			■			RM 754/751 ³⁾
Artificial stone floors (tiles, concrete, artificial stone, etc.)								
Matt	■ ■ ²⁾	■		■	■			RM 752 ¹⁾ /754/751 ³⁾
Glossy	■ ■ ²⁾	■		■	■			RM 754/751 ³⁾
Fine stoneware tiles			□			□		RM 752
Synthetic resin coats								
PUR, epoxy resin, stone carpet	■ ■ ²⁾	■		■ ■	■			RM 752/751 ³⁾
Restoring shine								
Coatings		■					■	RM 756
Maintenance cleaning								
Elastic floor coverings								
PVC, lino, rubber, PUR	■ ■ ²⁾	■		■	■		■	RM 756
Natural stone floors (granite, marble, slate, etc.)								
Matt	■ ■ ²⁾	■		■	■		■	RM 756
Glossy	■ ■ ²⁾	■		■	■		■	RM 755
Artificial stone floors (tiles, concrete, artificial stone, etc.)								
Matt	■ ■ ²⁾	■		■	■		■	RM 756
Glossy	■ ■ ²⁾	■		■	■		■	RM 755
Fine stoneware tiles			□			□		RM 753
Synthetic resin coats								
PUR, epoxy resin, stone carpet	■ ■ ²⁾	■		■	■		■	RM 69
Diamond cleaning system (natural stone floors, artificial stone, synthetic resin coats)								
Deep cleaning					◇ ◇			RM 756
Maintenance cleaning					◇ ◇			RM 755
Polishing								
Elastic floor coverings								
PVC, lino, rubber, PUR	□	■		□ ■	□ ■			RM 748
Natural stone floors (granite, marble, slate, etc.)								
Glossy	□	■		□ ■	□ ■			RM 748/746
Artificial stone floors (tiles, concrete, artificial stone, etc.)								
Glossy	□	■		□ ■	□ ■			RM 748
Synthetic resin coats								
PUR, epoxy resin, stone carpet	□	■		□ ■	□ ■			RM 748
Crystallising								
Limy floor coverings (marble, terrazzo, artificial stone, etc.)	■				◇			RM 749/775 ⁴⁾
Pad and brush colours								

□ White ■ Beige ■ Natural ■ Yellow ■ Carpet brush ■ Green ■ Red ■ Black □ Blue/White (Microfibre) ■ Orange ◇ ◇ ◇ Diamond White, Yellow, Green ■ SP Pad, Violet

¹⁾ Not on alkali-sensitive surfaces (lino, rubber, polished limestone, etc.)

²⁾ For joints and heavily textured coverings

³⁾ For mineral soiling on acid-resistant coverings (cement film, lime residues, etc.)

⁴⁾ Can only be used with pad discs

THE FUTURE OF CLEANING IS NOW

With Connected Cleaning, we are developing a digital product portfolio for you in which all elements work together perfectly. In the first step, we are bringing two great digital products together on a joint platform. Combined in a single piece of software, Kärcher Fleet and Kärcher Manage connect the entire infrastructure

of your cleaning fleet and generate effective synergies. Through Connected Cleaning, you get a completely new and transparent information basis. Using this, you can make decisions more easily, increase efficiency and thus work more economically.





Connected Cleaning



Kärcher Fleet **Fleet management**

The professional and forward-looking fleet management solution – Kärcher Fleet provides an extensive overview of machines and cleaning activities. Kärcher Fleet makes cleaning processes far more transparent and efficient. This results in smooth procedures and attractive cost savings.



Kärcher Manage **Facility management**

The high-performance management solution for manual cleaning. Easy, fast and precise paperless data acquisition. The benefits are greater transparency and a better result from the outset.

All information on Connected Cleaning and the Kärcher Fleet and Kärcher Manage modules can be found online at www.kaercher.com

YOU MANAGE YOUR SUCCESS. WE GIVE YOU THE SUPPORT.

Almost everything can be so much easier when talents are combined. Because it is more successful to pursue objectives together, complement each other and learn from each other. You can call it progress or advancement. We call it Kärcher Services. A promise of partnership. By professionals for professionals.



Kärcher Services:
The complete service package from the global leader. And the perfect continuation of the progressive Kärcher system with innovative tools, customised service offers and high-performance software solutions.



Kärcher Lease - Leasing
Customised. Flexible. Safe. We give you the flexibility you need: with leasing and financing models for every requirement.



Kärcher Used - Used machines
When used or second-hand is what you need. Starting up? Or simply just want to save costs? We have the right used machine for you. Used, generally reconditioned, good and affordable. Offers are constantly changing. Ask us.



Kärcher Service - Customer Service

Service means trust. At all times. Services you really need. Fast response for maximum availability. Maximum value retention and compliance with all statutory requirements.



Kärcher Maintain - Service packages

Every service package is tailored precisely to a defined requirement. The range of services includes inspections as part of prescribed safety tests, timely servicing and flat-rate full service.



Kärcher Rent - Renting

Just the machine you need. Rent instead of buying. And get more: know-how and Kärcher Full Service in a package.

SUSTAINABILITY IS MORE THAN ENVIRONMENTAL PROTECTION



Less is more. And less can do more

The primary aim of Kärcher eco!efficiency is to reduce the consumption of resources and energy with a cleaning performance that is tailored to specific applications. In order to calculate the possible savings in energy and CO₂ emissions over the service life of the machine and render them comparable, these were calculated based on the example of our T 12/1 and T 12/1 eco!efficiency dry vacuum cleaners. TÜV SÜD Industrie Service GmbH verified and confirmed the plausibility of the methodology for calculating greenhouse gas emissions in the utilisation phase of the T 12/1 eco!efficiency against benchmarks. Based on this methodology, Kärcher calculated that all T 12/1 eco!efficiency dry vacuum cleaners sold to date

will save around 6,000 tonnes of CO₂ emissions throughout their service life. All Kärcher eco!efficiency machines in total will save about 2.5 million tonnes of CO₂ emissions.

Work towards a better world: BlueCompetence

Blue is the colour of sustainability, which takes into account cost-efficiency, environment and society. Roughly 400 companies and organisations are involved in the "BlueCompetence" initiative launched by the German Engineering Federation (VDMA) and they all share a common goal: to improve the quality of life on our planet over the long term.

Sustainability means conducting business fairly, with a sense of responsibility towards people and the environment. Kärcher anchored sustainability as a corporate objective and has been practising it for decades: sound finances and satisfactory profits, achieved by dealing fairly with people and using resources responsibly.



Do more with less energy

The saving on CO₂ emissions of all machines equates to roughly 1.5 million flights from London to New York*. These figures clearly demonstrate how much energy and emissions can be saved by using Kärcher eco!efficiency cleaning appliances. When it comes to climate protection, less is always more – and achieves more.

* 1.7 tonnes of CO₂ per flight.

Climate-neutral cleaning

We cannot produce anything without emissions. But we can completely offset greenhouse gas (CO₂) emissions in order to neutralise their effects on the environment. And you can also do this for your industry.

For a small surcharge, you can offset the CO₂ emissions of your Kärcher cleaning machines so that they are climate-neutral over their entire operating life.

These contributions, yours and ours, are fully incorporated into a certified climate protection project of ClimatePartner: for example, "Water treatment in West Kenya" gives millions of people access to clean drinking water. The use of filter systems for water treatment saves 2.1 million tonnes of CO₂ emissions from firewood each year. At the same time, sustainable jobs for several thousand people are created. A project that is useful for everyone, completely transparent and accountable. Your sales advisor can explain how you can benefit from climate-neutral cleaning.



makes a difference

Please contact us for more information:

Kärcher Inc.

Kärcher Center Manila
8006 ECH Plaza
Dr. A. Santos Ave., Brgy. BF Homes
Sucat, Paranaque City
1720 Philippines

P: +63 2 7 957 0626 / 907 8520

M: +63 917 632 5652 / +63 917 714 3424

W: www.karcher.com.ph

E: info.ak-ph@ph.karcher.com

